



## **D 9.1 Project web site**

**Project acronym: CITI-SENSE**

**Project full title: Development of sensor-based Citizens' Observatory Community  
for improving quality of life in cities**

**EU FP7- ENV-2012**

**Grant Agreement No.: 308524**

Start date of project: 01 October 2012

Duration: 48 Months

Project Co-ordinator: Alena Bartonova, NILU

Due date of delivery: M4

Actual date of delivery: M5

Lead Beneficiary: NILU

Lead author: Sonja Grossberndt

Controller: Alena Bartonova and Elena Turco

Dissemination level: Public

## Contents

1. Summary .....	3
2. Background.....	3
3. Building principles .....	3
4. CITI-SENSE web pages .....	6
4.1 Public area .....	6
4.1.1 Home page .....	6
4.1.2 Project .....	6
4.1.3 Resources .....	6
4.2 Private area .....	6
4.2.1 Members .....	7
4.2.2 Work Packages .....	7
4.2.3 Pictures.....	7
4.3 Administration.....	7
5. Updating and further development of the portal.....	7

## 1. Summary

This deliverable describes the main functionalities of the CITI-SENSE public and internal web portal. Being built on the DNN (DotNetNuke) platform, the portal is easy to use and offers possibilities to build further functionalities. It is expected that the portal will be further developed.

## 2. Background

The provision of CITI-SENSE web pages for internal and external communication is one of the first tasks within WP9. The CITI-SENSE web portal has already been established prior to the project beginning for internal use and exchange of working documents. It has now been made publicly accessible via the domain names citi-sense.nilu.no, citi-sense.eu and citisense.eu.

## 3. Building principles

The portal is built on an open source framework, with the largest support and development team of any CMS worldwide. With over 500,000 published web portals built on DotNetNuke (DNN) this is today's market leading content management system.

DNN is an open-source content management system and is consequently license free.

DotNetNuke is built on the ASP.NET (VB.NET) platform. It is simple to use and extremely intuitive to the user, both administrators and end-users.

Some benefits that the DNN content management system include are greater site consistency, improved site navigation, streamlined authoring process, faster turnaround time for new pages and changes, increased site flexibility, support for decentralized authoring, increased security, reduced duplication of information, greater capacity for growth, and reduced site maintenance costs.

Figure 1 shows the home page of the CITI-SENSE portal. The portal includes both a public (blue coloured) and a private area (green coloured), as displayed in figure 2. In addition there is an extra section only accessible for administrators (red coloured).

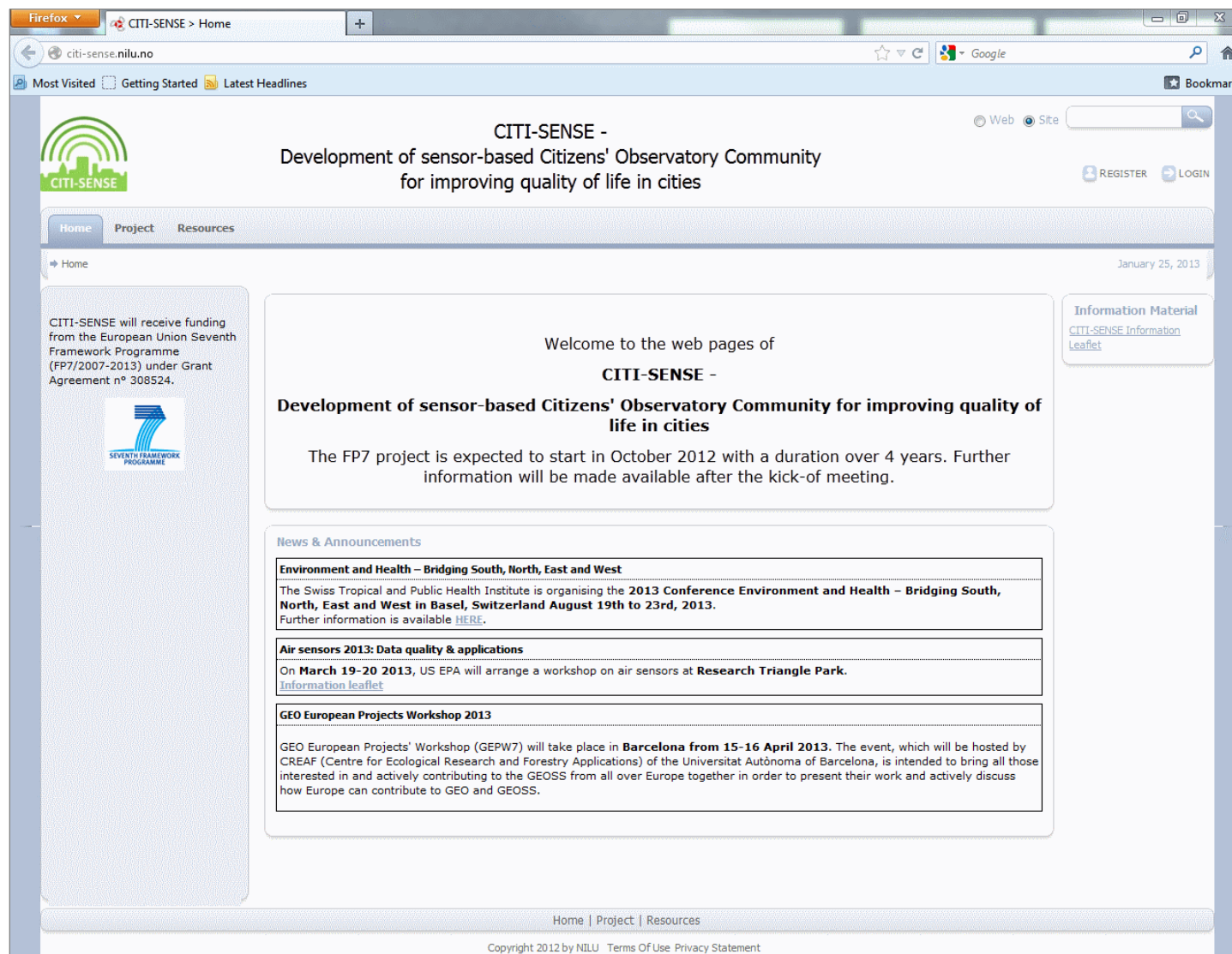


Fig.1: Screenshot of the CITI-SENSE web portal (citi-sense.eu; accessed 25 January 2013)

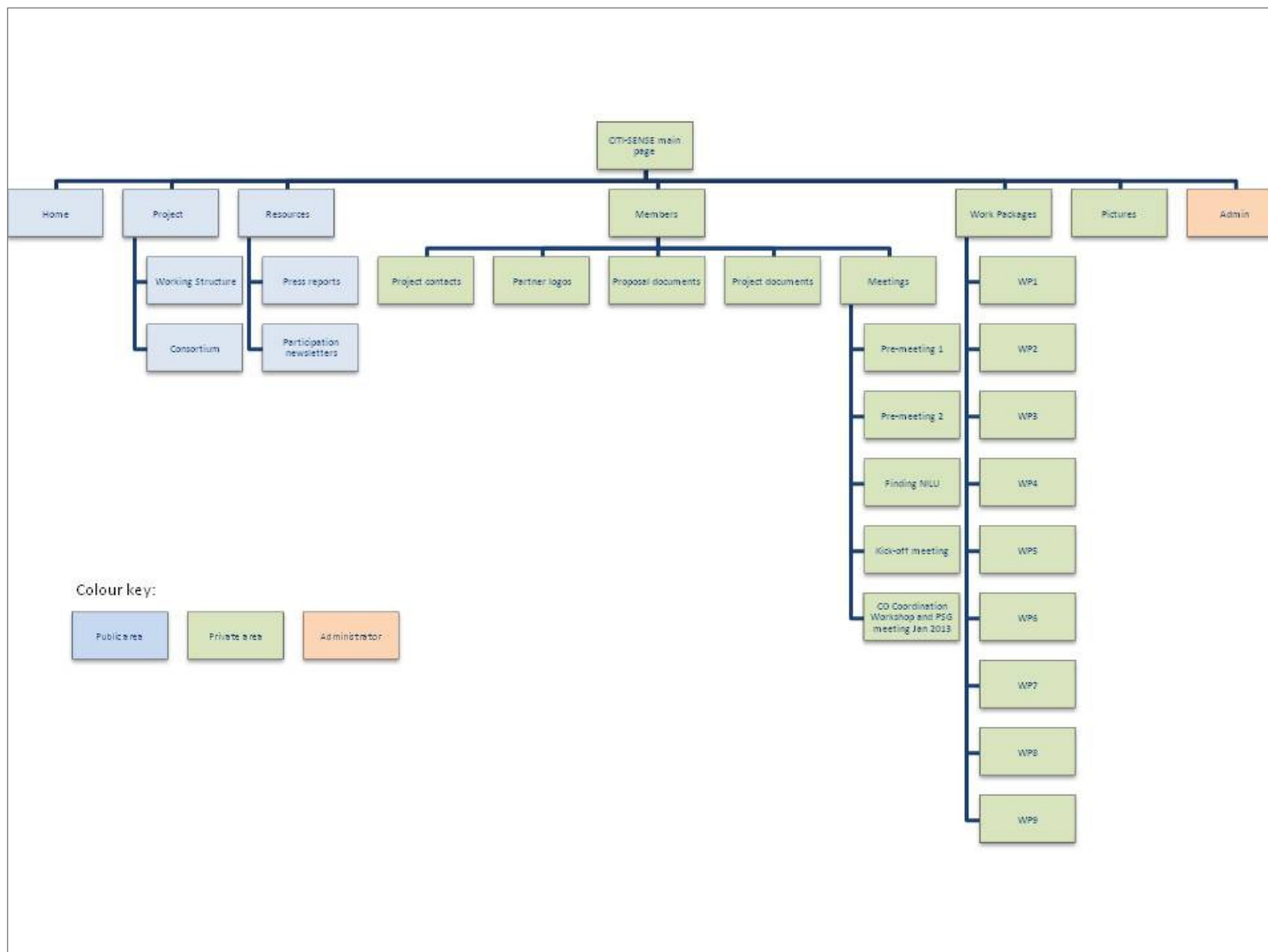


Fig. 2: Sitemap of the CITI-SENSE web portal

## **4. CITI-SENSE web pages**

The following part will describe the features of the web portal.

### **4.1 Public area**

This section is available for all internet users and serves as dissemination tool.

#### **4.1.1 Home page**

The home page is the entrance to the CITI-SENSE web portal. Here the user will find the most important material, news from the project and project related news and the option to sign in for the members' area. Each registration request will be reviewed by the administrator before permission is being granted to access the private area. This will be only available for project members, Project Officers and selected people with special interest in CITI-SENSE.

#### **4.1.2 Project**

This area provides information about the project as a whole, but also on a WP basis. It displays the working structure and gives an overview over the project consortium.

#### **4.1.3 Resources**

This section will be used to a larger extend during the course of the project. Right now only press reports and newsletters on topics related to citizen empowerment ("Participation Newsletters") are available. For the future, this will be the place where to find public deliverables, publications, and further information material.

### **4.2 Private area**

This section is accessible only by personal user name and password and serves as project internal communication tool. Members can upload their documents to this section to make them available to the whole Project Consortium.

#### **4.2.1 Members**

Here, an updated version of contact details of and for all project members is available. It is also possible for partners to upload the logo of their organization. Documents that have been compiled during the proposal writing process are being stored here, as well as further documents of importance for the project: Consortium Agreement, GA Documents, Meeting Minutes, Templates, Project logo(s) and Guidance and information documents for FP7. The Meetings section provides information about every meeting: information about the venue, meeting agendas, etc.

#### **4.2.2 Work Packages**

This part will be used to store the final versions of deliverables according to each WP.

#### **4.2.3 Pictures**

This section shall make pictures from project meetings available to the whole project consortium.

#### **4.3 Administration**

Only 5 people at the Co-ordinating Institute (NILU) have administrator rights for the CITI-SENSE portal. They can change/amend content and layout and administer the user roles.

### **5. Updating and further development of the portal**

The CITI-SENSE portal will be continuously updated and adjusted according to the demands and needs of the project. New functionalities may be added upon the demand from project partners or from project organs such as the Project Steering Group.

The CITI-SENSE portal will be used for dissemination purposes and will store a pool of information material both for internal and external use. As mentioned earlier, the portal will store a number of documents relevant for the Consortium. However, there will be another online portal used for storage and editing of project internal working documents. This so called "Knowledge base" has restricted access only for CITI-SENSE Consortium members and is accessible at <http://confluence.nilu.no>.

Confluence is a meta wiki system that enables the creation of a hierarchical representation of pages (very different from a standard wiki) as well as providing a wealth of built in tools that promote cross team collaboration. These include design tools for the creation of diagrams, mockups and other visual aids, as well as templates for pages ensuring standardization. In addition, Import/Export functions to and from Word and PDF formats enable easy data integration plus the normal wiki features, such as rollback, history, etc.

Confluence is a commercial application, but is available for free to non profits, educational institutions and charities.